



INNOVATIVE PRE-ENGINEERED
METAL BUILDINGS



IT'S PRIME TIME

When you need more than a metal building, you need Prime. Prime Metal Buildings & Components is the leading designer and supplier of innovative metal buildings.

WWW.PRIMEBLDG.COM

TABLE OF CONTENTS

- 2 > **About Prime**
- 4 > **Commercial Buildings**
- 8 > **Residential Buildings**
- 12 > **Hangar Buildings**
- 16 > **Equestrian Buildings**
- 20 > **Dairy Buildings**
- 26 > **Agricultural Buildings**
- 30 > **Metal Roofing**
- 34 > **Kit Buildings**
- 36 > **Building Components**
- 38 > **Sheet Metal**
- 40 > **Trim & Gutters**
- 43 > **Structural Steel**
- 45 > **Doors**
- 46 > **Srews, Anchors, Rivets**
- 47 > **Locations**

WHEN YOU NEED MORE THAN A METAL BUILDING, **PRIME** You Need

We manufacture and supply metal buildings and metal building components for any project type. Our design approach is interactive and allows you to be included in every step of the project to ensure you are getting exactly what you need. We build relationships and metal buildings that last. Our capabilities are vast as your imagination.

“ The customer service has been excellent, turnaround time on orders is exceptional, they offer a quality selection of materials. I highly recommend these guys and their business!
- Grady Douglass
Douglass Steel Structures ”



PRIME SHIPS
COAST
← TO →
COAST

OUR PROCESS



Collaborate

First, we listen and learn about your project and your vision. Then our team will assess your needs and make suggestions based on our experiences. We will work with you to make sure that you get the metal building you need.



Design

We use state-of-the-art technology to create preliminary drawings that you can use to visualize your new building. We'll include you in the process as we design your project.



Estimate

Our team of estimators will evaluate your project's design, timeline, and budget to provide you with a detailed quote. With our history of delivering both small and large projects on time and on budget, you can rest assured that we have taken every detail into consideration when formulating your quote.



Commit

Once an agreement has been reached, it's time to sign the paperwork and get started! We'll communicate key production and delivery dates, so you know exactly what to expect.



Manufacture

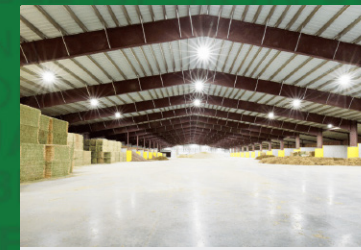
Our in-house production capabilities allow us to manufacture everything that goes into a metal building including primary framing, secondary framing, sheets, and trim. Our streamlined production process has been proven to deliver even the largest facilities on time and on budget.



Support

We're with you from start to finish, and we mean it. Once your building is delivered, we provide support throughout the entire erection process.

Metal Building Solutions



AGRICULTURAL



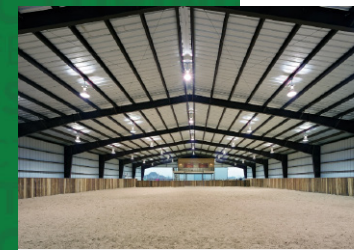
AVIATION



COMMERCIAL



DAIRY



EQUESTRIAN



RESIDENTIAL



ROOFING

About Us

Prime is a full-service metal building and metal building component manufacturing company. We design, engineer, and supply metal buildings and manufacture everything that goes into a metal building including roof panels, trim, wall panels, purlins, rafters, and columns. Since the beginning, integrity and a good solid work ethic has been the basis on which Prime has built over two decades of business on.

It's Prime Time.

Give us a call for a fast, free quote today!
(254) 445-4462



Scan to watch video.

Made by Prime.

From structural steel and purlin to sheets and trim, Prime manufactures all three of the main metal building components in house. Prime's highly skilled employees are proud to put their "made in the U.S.A." brand on each piece of steel that we fabricate. Once fabricated, Prime then ships your custom building directly to your job site, where the steel arrives ready to bolt together with a complete set of erection plans. From expert design to fabrication, Prime does it all for you!

For over 25 years, we have been custom designing durable metal buildings to fit any type of project including agricultural, aviation, commercial, equestrian, dairy, residential, and more.



INDUSTRY SPECIFIC COMMERCIAL BUILDINGS.

Prime means business when it comes to commercial metal buildings. We have extensive commercial and industrial building experience that includes manufacturing facilities, offices, warehouses, crane buildings, retail spaces, garages, and more. Our design approach is interactive and allows you to be involved throughout the entire project. We'll work with you to give you a design that is the most functional for your industry and allows maximum productivity for your business.

- > Office Spaces
- > Shops & Garages
- > Storage & Warehouses
- > Manufacturing Facilities
- > Retail Spaces
- > And More!

We have a quirky saying at PRIME. While other companies say they'll stand behind their buildings, we like to say we'll stand IN ours! Our own office space and manufacturing shops are housed under 260,000+ square feet of Prime metal buildings.





| Coloscapes Office



| Kimber Lea Place Shopping Center



| Cowboy Capital Self Storage



| Altstadt Brewery Tractor Museum



| Pal-Con Manufacturing Facility



| Tarleton State University Animal And Plant Science Center



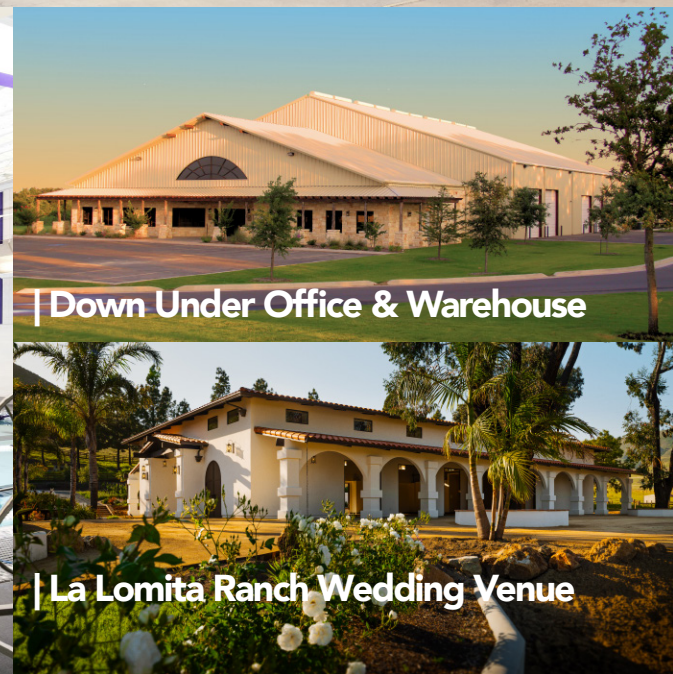
| Empire Holdings Office Space & Warehouses



| Quick Lane Auto Shop



| Tarleton State University Animal And Plant Science Center



| Down Under Office & Warehouse

| La Lomita Ranch Wedding Venue

THE COMFORT OF HOME **RESIDENTIAL BUILDINGS.**

Metal homes are one of the fastest-growing housing trends in the nation. A major reason for their spike in popularity is the flexibility in layouts and features along with the option for open floor plans. Need a shop attached to your house? No problem! Want living space in your hangar? You got it! Can you attach the horse stalls to the house? Absolutely! The possibilities for your home are endless with a metal building from Prime. All Prime metal buildings are manufactured right here in the USA. No project is too big or too small for Prime!

- > **Barndominiums**
- > **Hangar Homes**
- > **Shop & Garages**
- > **Outbuildings**
- > **Carpools & RV Covers**
- > **And More!**

I have had a business relationship with Prime Metal Buildings & their associated components yards since 2005. In the last 7 years, I have erected over 30 of their pre-engineered buildings & over 100 buildings using their components store. The fast turnaround has been one of the keys to my success & Prime Metal Buildings is the only local metal building supplier that builds its steel products & sheet metal in house. I have not been able to find that kind of service anywhere else!

Chris Williams, CRW Contracting, Inc.





| Kolar Custom Homes Springtown



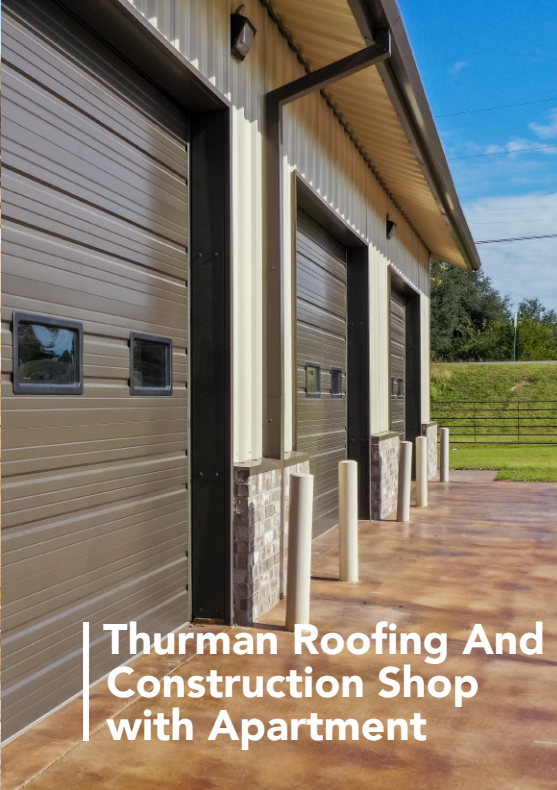
| De Leon Boat Dock



| RFH Custom Homes Hamilton



| Legacy Development - Texas Wise County



| Thurman Roofing And Construction Shop with Apartment



| Horseman's Ranch Barndominium



| Griffin Construction Lingleville



| Turning Point RV Cover



| NoBull Metal Buildings Shop Kennel Combo



| RFH Custom Homes Levita



| W.B. Jones Construction

DURABLE & VERSATILE AIRCRAFT HANGARS.

Prime metal buildings give you the strength and clear span capabilities you need for durable, functional aircraft hangars. Our pre-engineered steel framing systems allow for clear spans that can reach over 250' wide. Multiple door systems, residential areas, as well as mezzanines, office space, galleries, and maintenance areas can all easily be incorporated into your custom design. All Prime metal buildings are manufactured right here in the USA.

- > Single Aircraft Hangars
- > T-Hangars
- > Commercial Hangars
- > Maintenance Hangars
- > Hangar Homes
- > Corporate Hangars
- > And More!

When Rick Hale was contracted to construct hangars for Clark Regional Airport, **HE CHOSE PRIME.**

Prime has provided me and my business 24/7 service since 1998. There is no harder working and honest staff than the folks at Prime around this area that I would trust. The service they've provided my business is the absolute best. Always prompt and always professional. I highly recommend the experts at Prime.

Rick Hale - Rick Hale Construction





| Perryton Hangar



| Clark Regional Airport Hangar



| Perryton Hangar



| Prime Corporate Hangar



| Prime Corporate Hangar



| Lubbock Aero Hangar



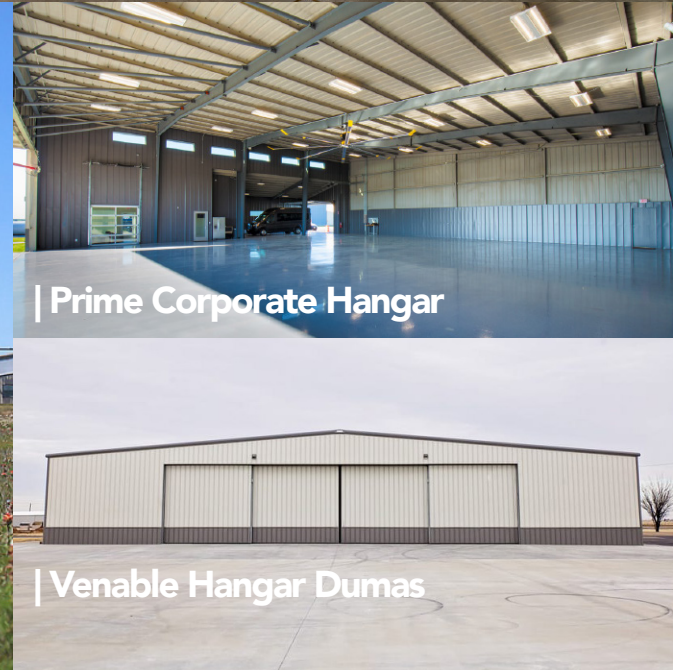
| Lubbock Aero Hangar



| Clark Regional Airport T-Hangars



| Clark Regional Airport Hangars



| Prime Corporate Hangar

| Venable Hangar Dumas

DESIGNED FOR THE EQUESTRIAN.

Prime is located in the heart of Texas, better known as the Cowboy Capital of the World. Whether you're building a small barn for a few horses or an Olympic sized equestrian event facility, Prime has got you covered. Our team is very familiar with the needs of equestrians and their horses because we are equestrians ourselves! We'll listen to you to gain an understanding of your vision, assess your needs, and then design and supply the building of your dreams. All Prime metal buildings are manufactured right here in the USA. No project is too big or too small for Prime!

- Horse Barns
- Roof-Only Arenas
- Partial Wall Arenas
- Fully Enclosed Arenas
- Hay Barns
- Covered Trailer Parking
- And More!

Dealing with Prime is an easy, pleasant experience. As a novice builder in 2002, Prime made it easy. I didn't even call another builder. I ordered over the phone, had a design and plans within three hours. That's service.

The building is cool in the summer, has 204 skylights and not one has been replaced in three years. We liked it enough to build a shop at our new home. I urge you to make the call to Prime your first step."

David Isham - Owner, NRS Supply and National Training Center, Decatur, Texas





| Rafter T Arena



| Horseman's Ranch Barndominium



| 4B Ranch Arena



| NRS Event Center



| Fellows Horse Barn



| BeShears Arena



| Horseman's Ranch Arena



| Smith Arena



| Fellows Horse Barn



| NRS Event Center

| Miller Arena

WE SPEAK DAIRY.

With over 25 years of experience in the dairy industry, we know a thing or two about what it takes to design an innovative dairy facility to maximize cow comfort and milk production while keeping costs down. Prime understands the unique challenges of the dairy industry, and we instill that knowledge into our building designs and layouts. Our wide range of dairy building designs is constantly evolving to accommodate new technologies. Prime's goal is to take a proactive, not reactive approach when incorporating innovative technology into dairy facility designs.

- > Freestall Barns
- > Cross Ventilated Barns
- > Milk Parlors
- > Commodity Barns
- > Robotic Barns
- > And More!

Prime understands that Dairy Operations are businesses that work with living machines, and the machines long term well-being decides the Dairy's long term well-being. Prime knows the environments within the Dairy and the need for proper materials and building configurations.

Greg Beath - Lines to Designs, LLC



DAIRY BUILDING CONFIGURATIONS

Robotic Barns

In the past 25 years, the evolution of milking equipment and practices has been one of the fastest-growing technologies in the agricultural industry. With robotic milking systems, the need for a separate milking parlor is nonexistent. Automated milking and feeding systems must be taken into consideration during the building design phase. We have seen most robotic facility designs built as an LPCV barn or tunnel ventilated barn although some facilities are choosing to utilize robotic technology in standard freestall setups and separated robotic milk parlors. Prime understands that building designs and layouts must evolve with the industry to ensure the final product works well for many years to come.



Milk Parlors

Prime knows the unique design requirements of milking centers because our roots are in dairy farming. We've seen what works and what doesn't firsthand and understand the unique challenges to cow flow presented by milk parlors. Whether your operation needs a carousel, dual carousel, herringbone, parallel stalls, or even a robotic milk parlor, Prime will work with you to expertly craft a milk parlor design.

Freestall Barns

A freestall barn from Prime will meet your dairy's current needs while providing you with the opportunity to expand as your operation grows. We'll match the right freestall barn design and features to your area's climate and conditions. Our clear-span frame designs with lean-tos allow for optimum interior space and unobstructed views.



Commodity Barns

Prime knows the unique design requirements of milking centers because our roots are in dairy farming. We've seen what works and what doesn't firsthand and understand the unique challenges to cow flow presented by milk parlors. Whether your operation needs a carousel, dual carousel, herringbone, parallel stalls, or even a robotic milk parlor, Prime will work with you to expertly craft a milk parlor design.

Cross Ventilated Barns

Prime's Cross Ventilated dairy barns are tailor-made with the end goal of maximizing cow comfort. These cross-vent barns allow the dairyman to have more control of the internal barn temperature year-round. Benefits of a Prime cross vent barns include reduced ammonia, more cow comfort, more milk (due to cow comfort), longer milking life (due to cow comfort), improved air quality, consistent temperatures year-round, more housing under one roof, smaller site footprint, fly and bird control, and less parlor to barn travel.



Hay Barns

Prime knows the unique design requirements of milking centers because our roots are in dairy farming. We've seen what works and what doesn't firsthand and understand the unique challenges to cow flow presented by milk parlors. Whether your operation needs a carousel, dual carousel, herringbone, parallel stalls, or even a robotic milk parlor, Prime will work with you to expertly craft a milk parlor design.



| Freestall Barns



| Milk Parlor



| Cross Ventilated Barn



| Cross Ventilated Barn & Milk Parlor



| Milk Parlor



| Freestall Barns



| Commodity Barn



| Hay & Commodity Barns



| Robotic Cross Ventilated Barn



| Robotic Cross Ventilated Barn



| Freestall Barns

A PARTNER IN **AGRICULTURE.**

Prime has designed and provided buildings for nearly every sector of the agricultural industry. Whether your operation needs a barn for livestock or poultry, sheltered storage for commodities, a workshop, or an equipment barn, Prime fills the need with durable, economical ag buildings. We will work with you to custom design a building that fits your specific needs. All Prime metal buildings are manufactured right here in the USA. From massive commercial animal barns to grandma's chicken house in the backyard, no project is too big or too small for Prime!

- > **Animal Barns**
- > **Commodity Barns**
- > **Mechanic Shops**
- > **Hay Barns**
- > **And More!**

86% of U.S. agricultural products are produced on family farms or ranches. Prime is committed to the families of the agriculture industry.





| Hay Barn & Equipment Cover



| Commodity Barns



| Commodity Barn



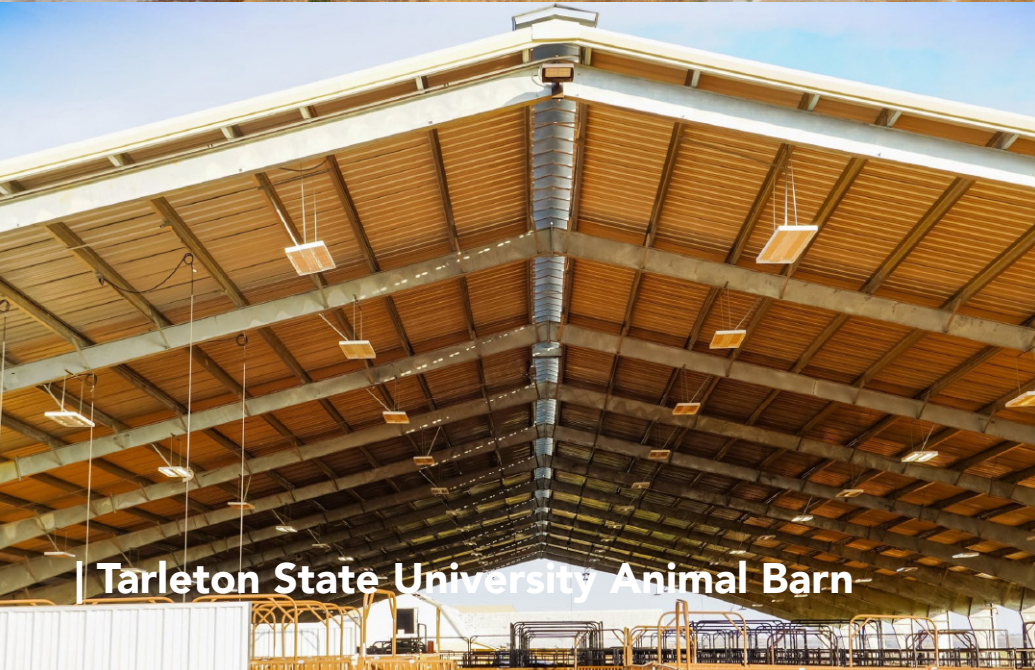
| Commercial Poultry Barns



| Commercial Poultry Barn



| Show Pig Barn



| Tarleton State University Animal Barn



| Farrowing Barn



| Show Pig Barn



| Equipment Shop



| Milk Bottling Facility

WHAT MATTERS MOST IS UNDER YOUR ROOF.

Metal roofing has quickly become the number one choice for residential and commercial roofing. Prime metal roofing systems provide an aesthetically pleasing look, durability, longevity, and home energy savings. The metal roofing panels are easy to install and are tough enough to handle even the most extreme weather conditions. With a wide variety of panel profiles and color options to choose from, you can rest assured that Prime has exactly what you are looking for!

The Prime Roofing Advantage



40 YEAR WARRANTY

on Sherwin Williams Coil Coatings Colored Panels



25 YEAR WARRANTY

on Acrylic Coated Galvalume Panels



IMPACT RESISTANT

UL Class 4 Rating



FIRE RESISTANT

UL Class C Rating



CUSTOM TRIM CAPABILITIES

up to 32' (may vary based on branch location)



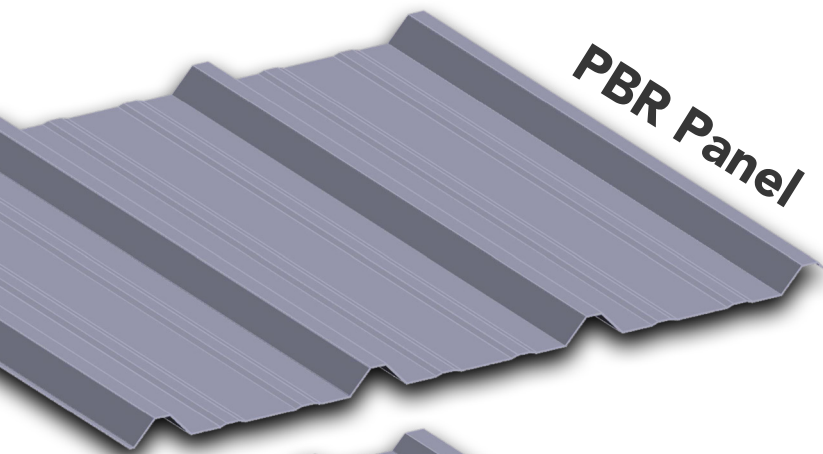
26-GAUGE STANDARD

on all roofing material

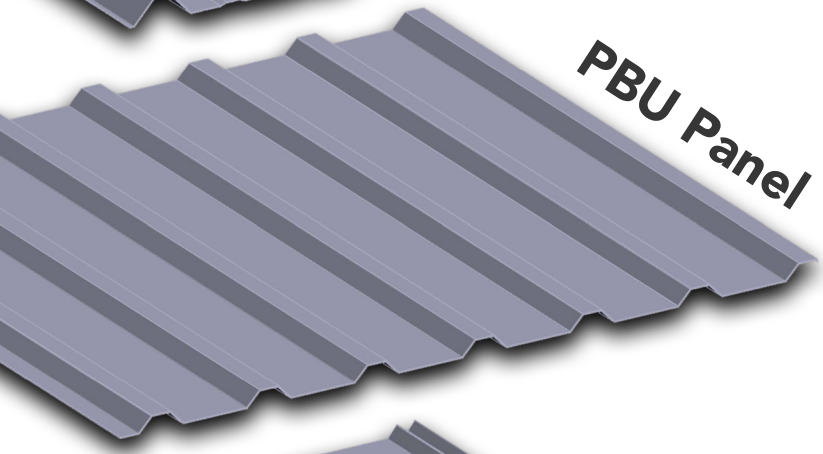
This place is great! Awesome service and delivered my roof materials on time. Professional quality and excellent customer service.

Wise Construction & Solar

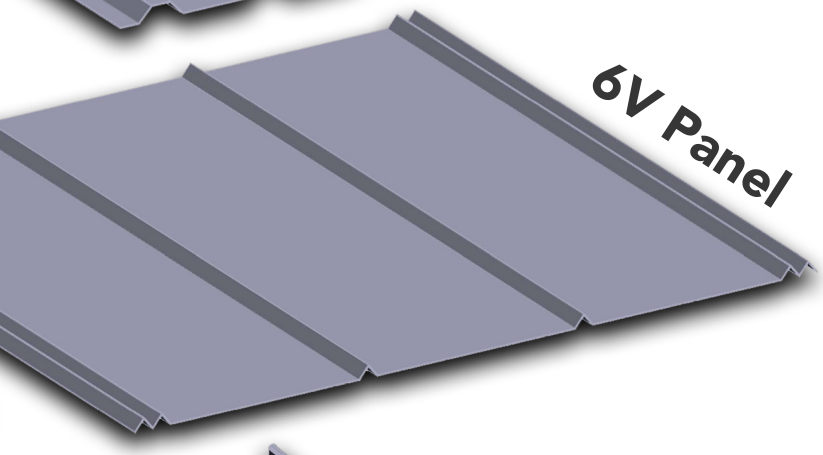




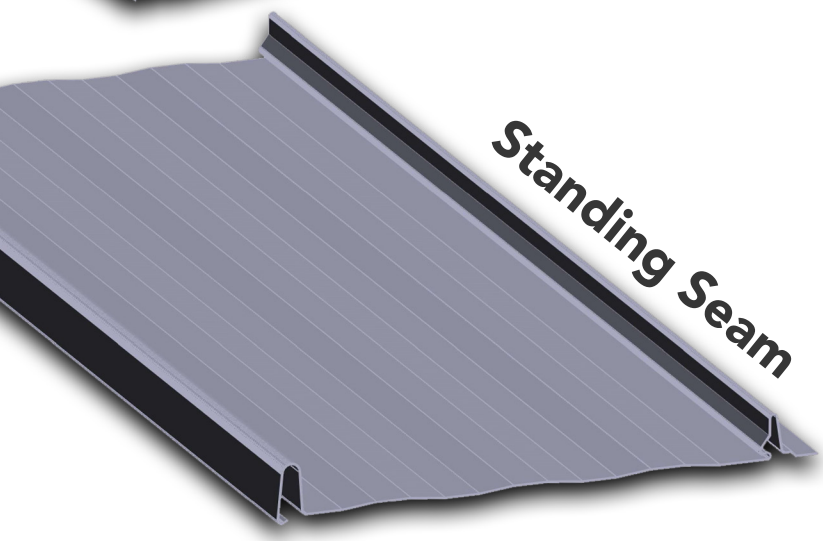
PBR Panel



PBU Panel



6V Panel



Standing Seam



| Commercial PBR Roof - Dark Blue



| Commercial Standing Seam - Black



| Standing Seam Roof - Medium Bronze



| 6V Roof - Galvalume



| Commercial PBR Roof - Galvalume w/Skylights



| PBR Roof - Galvalume



| PBR Roof - Copper

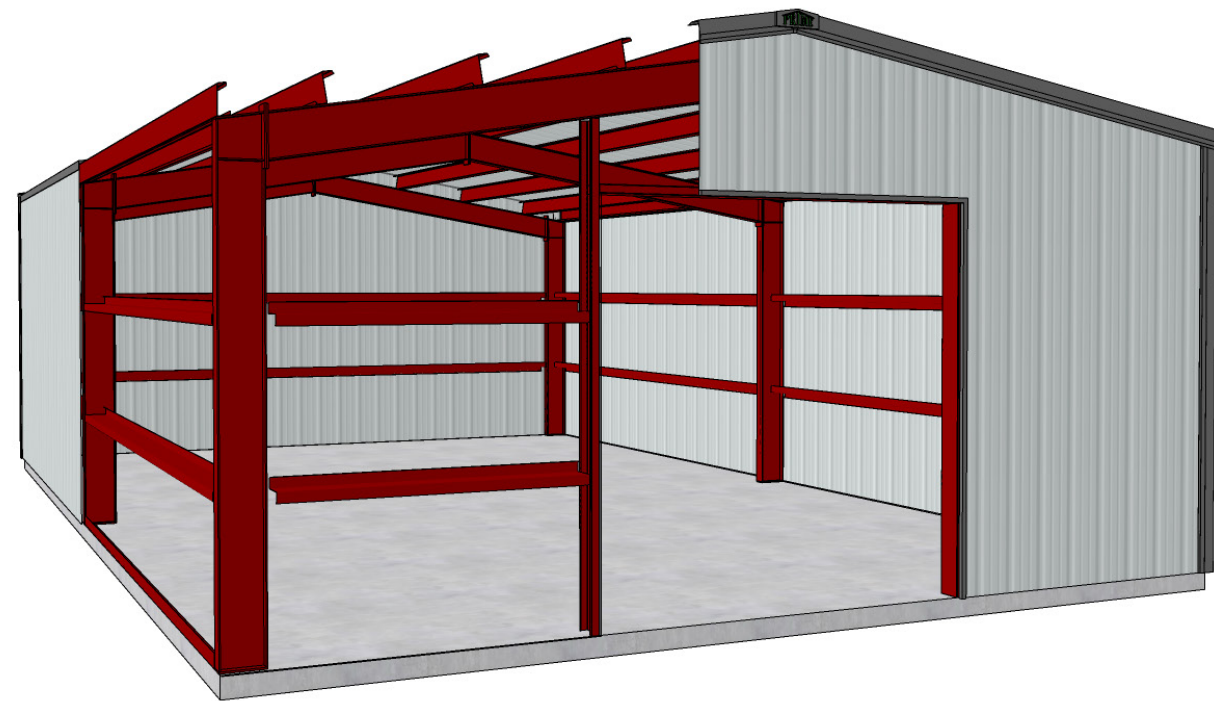
| PBR Roof - Koko Bown



Color Chart is located on page 49
Scan QR code to visit Prime's color selector tool.

PRE-ENGINEERED BOLT TOGETHER SHOP/GARAGE KITS

FULLY CUSTOMIZABLE



30' X 40' X 12' KIT

KIT INCLUDES:

- 26g Painted walls with a 40-year warranty
- 26g Galvalume roof with a 25-year warranty
- 10'x10' Roll-up door opening
- 3'x7' Standard walk door
- Erection Drawings
- Other accessories available
- IBC 2012 20 (psf) snow/115 (mph) wind

40' X 60' X 16' KIT

KIT INCLUDES:

- 26g Painted walls with a 40-year warranty
- 26g Galvalume roof with a 25-year warranty
- 14'x14' Roll up door opening
- 3'x7' Standard walk door
- Erection Drawings
- Other accessories available
- IBC 2012 20 (psf) snow/115 (mph) wind

Prime's shop/garage kits are fully customizable. Pick your kit, your colors, and your accessories.
Additional kit sizes COMING SOON!



Color Chart is located on page 49

Scan QR code to visit Prime's color selector tool.

THE PRIME ADVANTAGE:

- 40 Year Warranty Valspar Painted Products
- 25 Year Warranty Acrylic Coated Galvalume
- Impact Resistant - UL Class 4 Rating
- Fire Resistant - UL Class C Rating
- 26-Gauge Standard

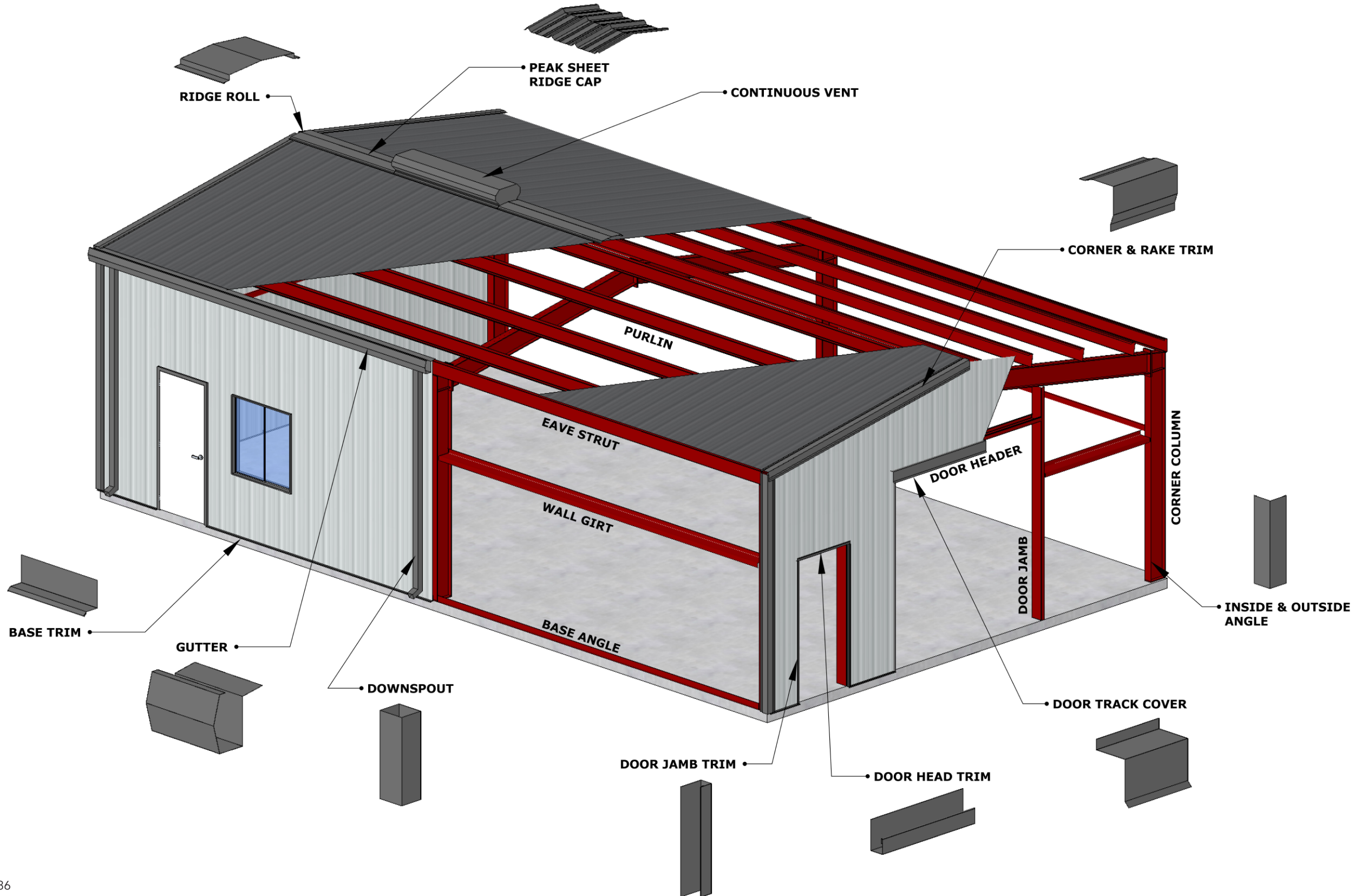


IT'S AS EASY AS

- 1. PICK YOUR KIT**
Additional kit sizes are available. Call any of our stores for additional sizes.
- 2. PICK YOUR COLORS**
Pick your wall, trim, and accessory colors from our wide variety of color options.
- 3. PICK YOUR ACCESSORIES**
Pick your wall, trim, and accessory colors from our wide variety of color options.



MADE BY PRIME: COMPONENTS, PURLIN, & STRUCTURAL STEEL



Prime manufactures everything that goes into a metal building including roof panels, trim, wall panels, purlins, rafters, and columns. By keeping component and structural steel production in-house, we are able to offer the highest quality of products on the market. Our four Texas locations are well-stocked with a full inventory of metal building components, have custom trim capabilities, and can cut panels to length up to 32'.

The Prime Panel Advantage

-  **40 YEAR WARRANTY**
on Sherwin Williams Coil Coatings Colored Panels
-  **25 YEAR WARRANTY**
on Acrylic Coated Galvalume Panels
-  **IMPACT RESISTANT**
UL Class 4 Rating
-  **FIRE RESISTANT**
UL Class C Rating
-  **CUSTOM TRIM CAPABILITIES**
up to 32' (may vary based on branch location)
-  **26-GAUGE STANDARD**
on all roofing material

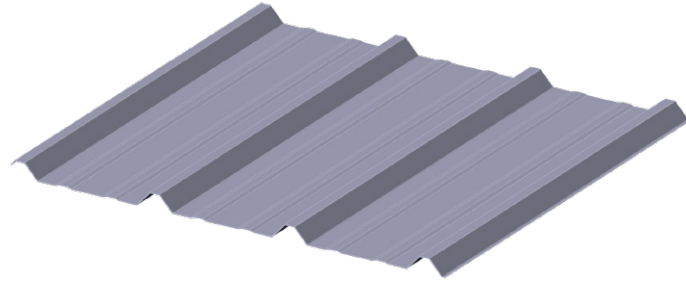
Prime offers a 24-hour turnaround on custom formed sheets and trim.



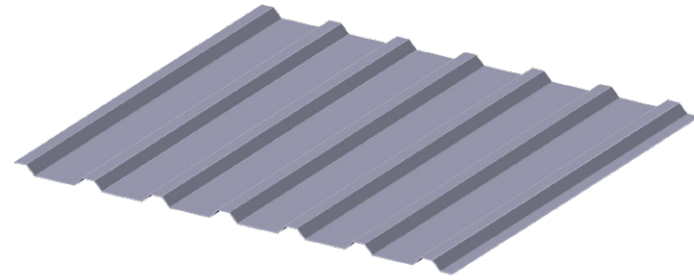
Branch locations in Dublin, Dumas, Bridgeport, and Kerrville, Texas.
Scan QR code to find a location near you.

>> SHEET METAL

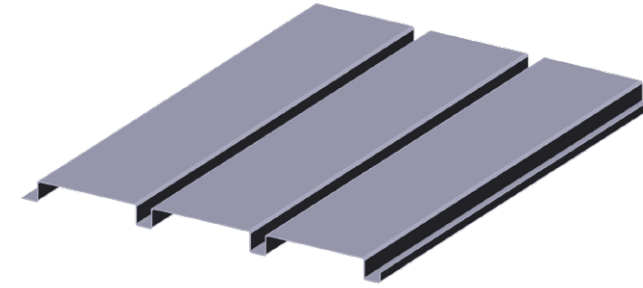
Scan item QR codes for additional info and specs.



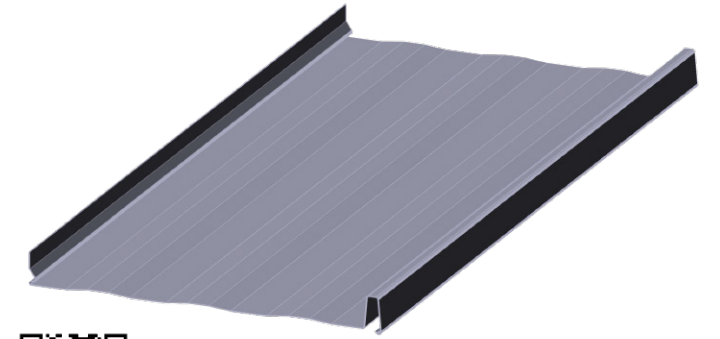
 | **PBR & R Panel**




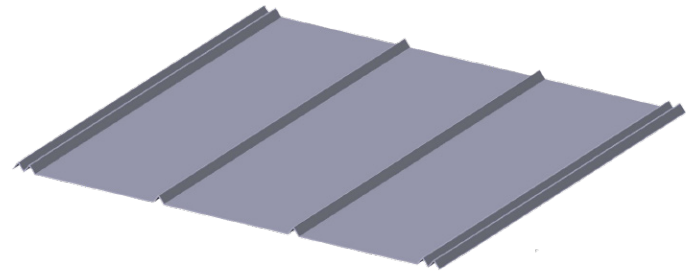
 | **PBU & U Panel**



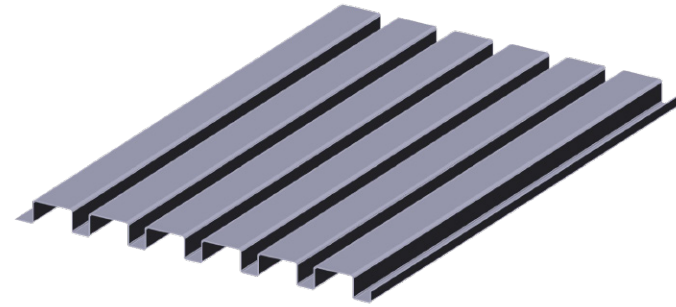
 | **BR-4 Panel**



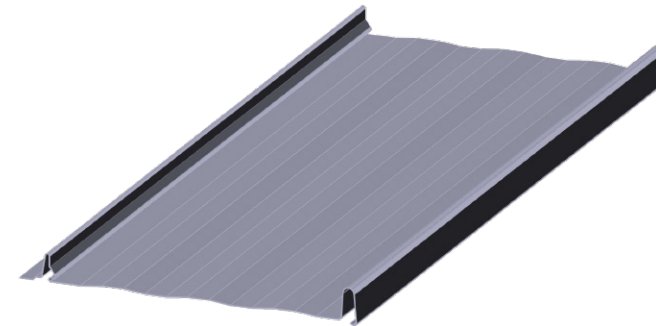
 | **PCL Standing Seam Panel**



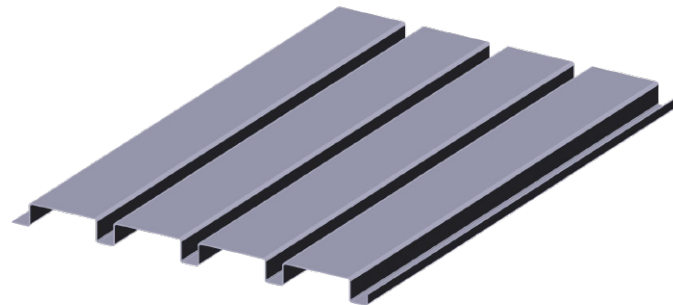
 | **6V Panel**



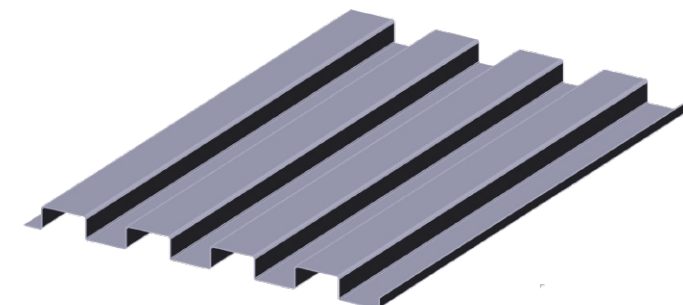
 | **BR-1 Panel**



 | **PSL Standing Seam Panel**



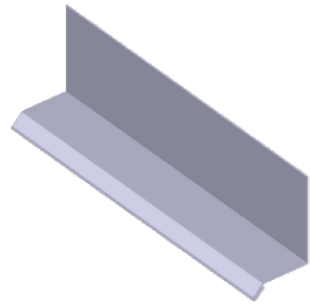
 | **BR-2 Panel**



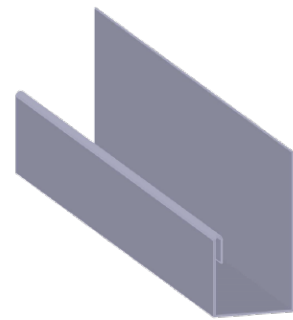
 | **BR-3 Panel**

>> TRIM & GUTTERS

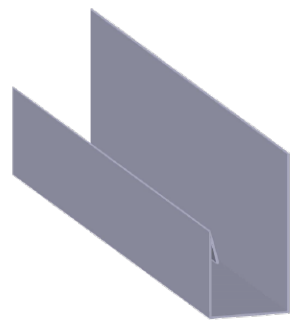
Scan item QR codes for additional info and specs.



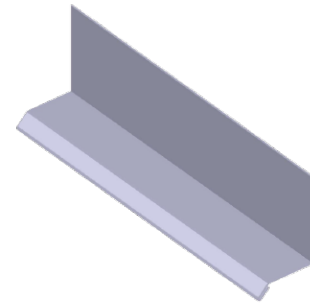
Base Trim



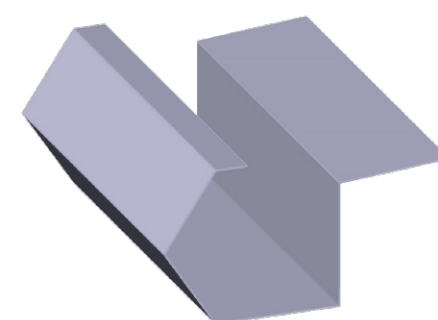
Door Head Trim



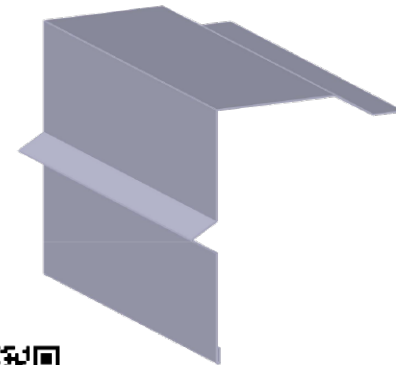
Door Jamb Trim



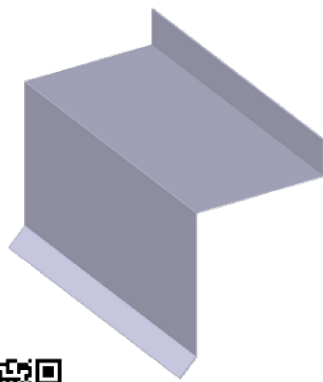
Hip Trim



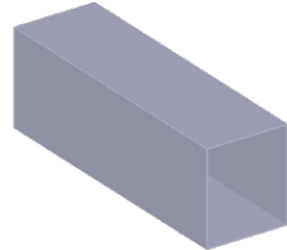
House Gutter



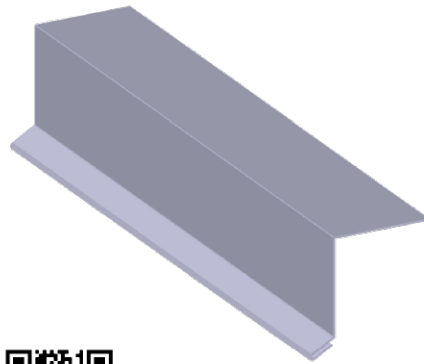
House Rake V-Trim



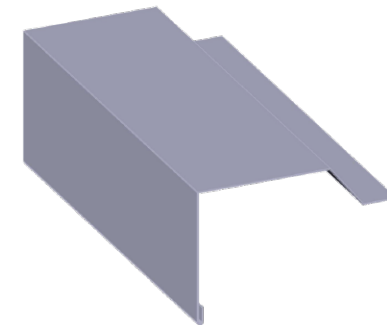
Door Track Cover



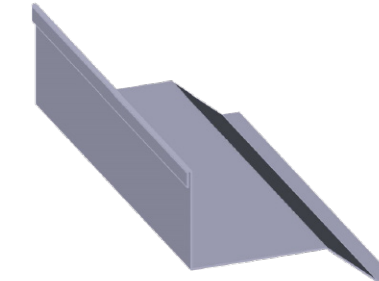
Downspout



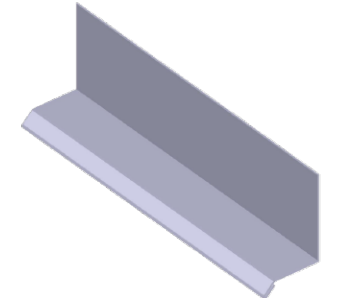
Drip Edge



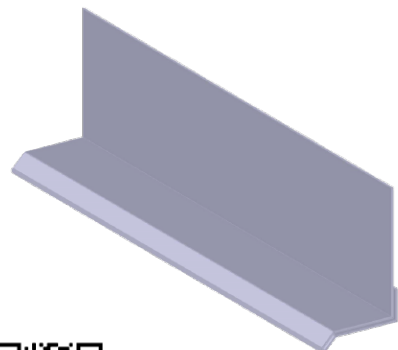
House Rake Roof



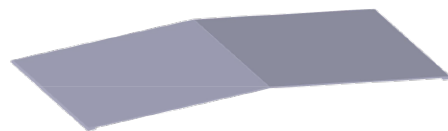
House Roof Transition



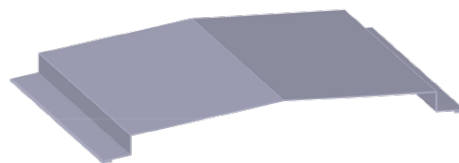
Inside Angle



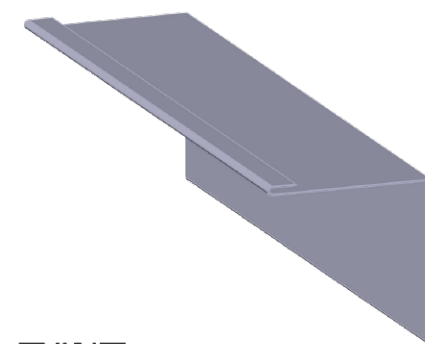
Drip Trim



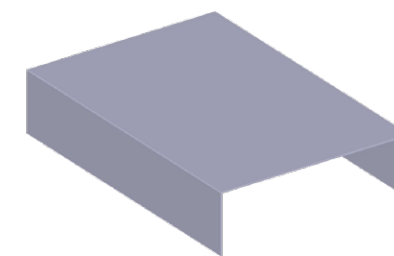
Flat Ridge Roll



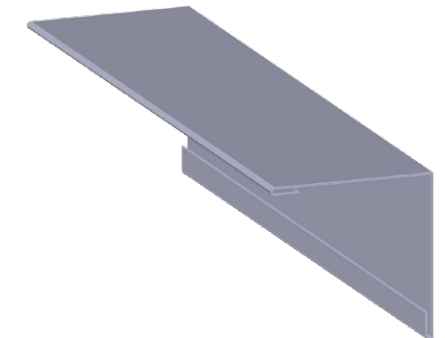
Hat Ridge Roll



Inside Rake



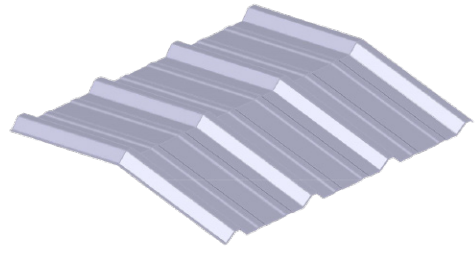
Jamb Cover



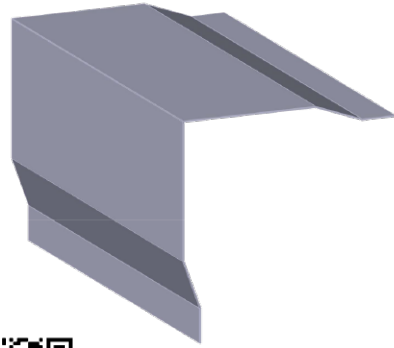
Outside Angle

>> STRUCTURAL STEEL

Scan item QR codes for additional info and specs.



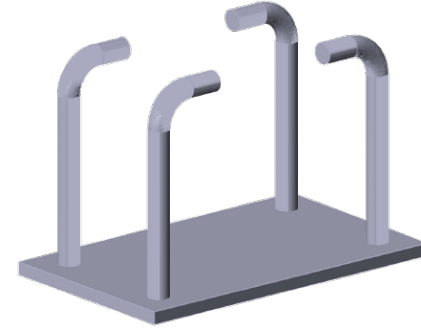
 | Peak Sheet/Ridge Cap



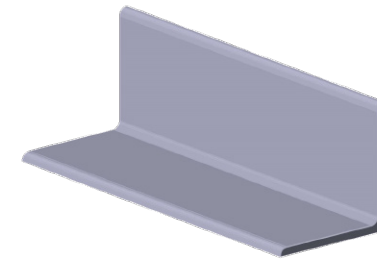
 | Rake & Corner



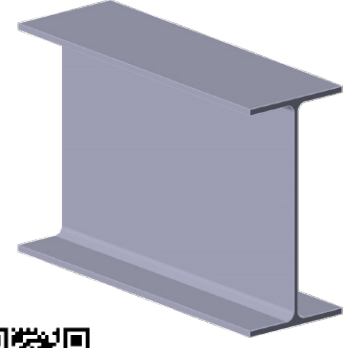
 | Sculptured Eave Gutter



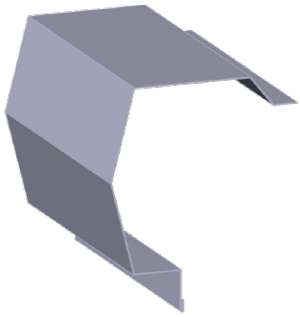
 | Anchor Plates



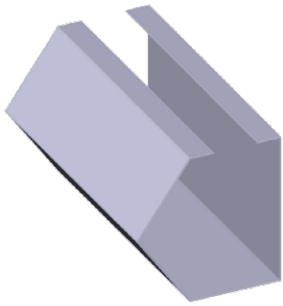
 | Base Angle Iron



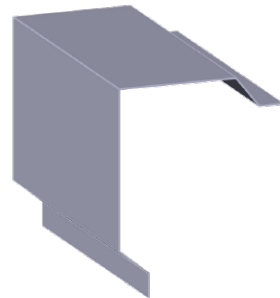
 | Beams



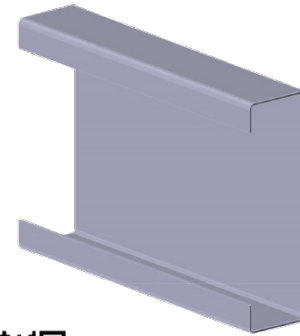
 | Sculptured Rake Trim



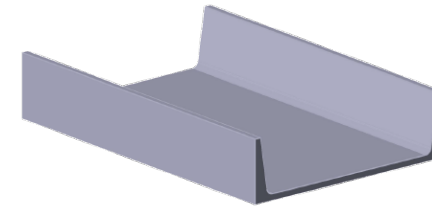
 | Utility Gutter



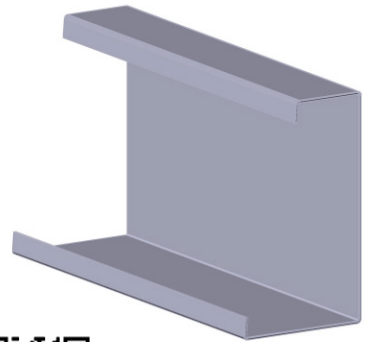
 | Utility Rake & Corner



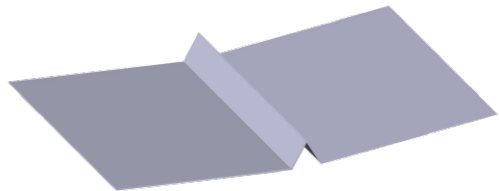
 | C Purlins



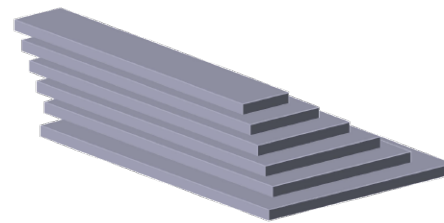
 | Channel Iron



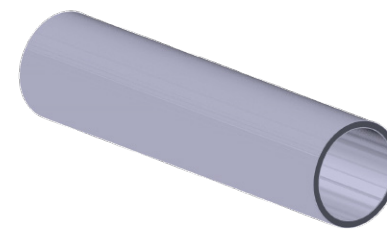
 | Eave Strut



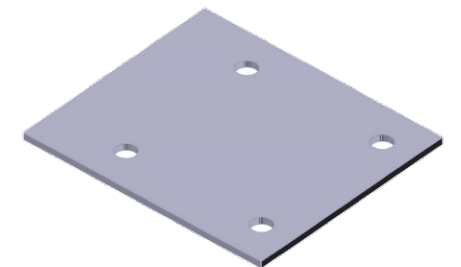
 | Valley Flashing



 | Flat Bar



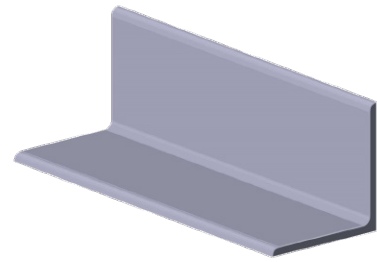
 | Pipe




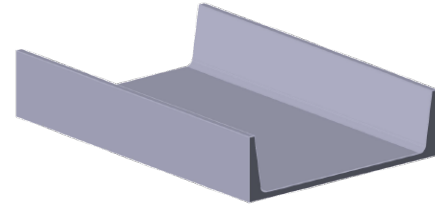
 | Purlin Clips

>> DOORS

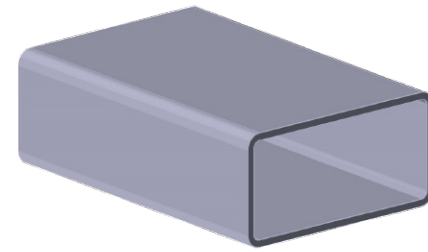
Scan item QR codes for additional info and specs.



 | Rake Angle Iron



 | Receiver Channel Iron



 | Rectangular Tubing



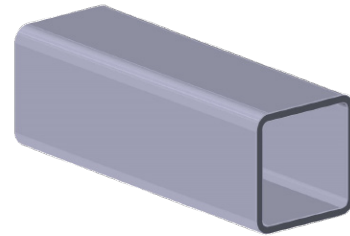
 | Access Doors



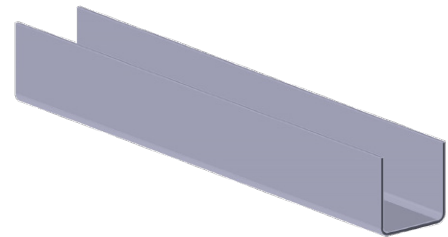
 | Deadbolt Locks



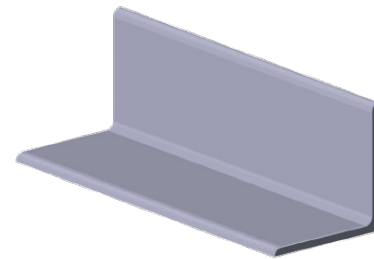
 | Knob Locks



 | Square Tubing



 | Stall Channel Iron



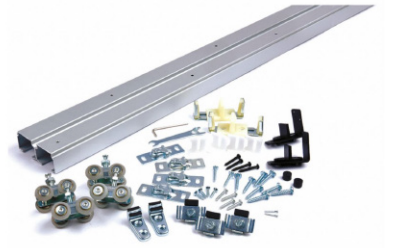
 | Structural Angle Iron



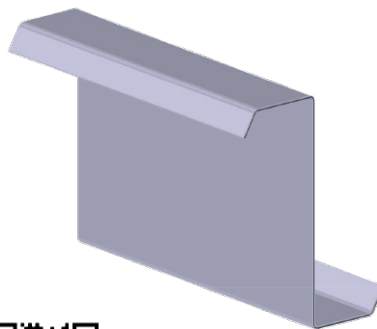
 | Lever Locks



 | Roll Up Doors



 | Sliding Door Supports



 | Z Purlins

>> SCREWS, ANCHORS, RIVETS

Scan item QR codes for additional info and specs.



Goof Screws



Hammer-Drive Anchor



Impaxx Beam



Long Life Woodgrip Screw



Rivets



TEK Lap Screw



TEK Metal Screws



Trailer Screws



Wedge Anchor



National Sales Office

Main location for pre-engineered metal building design, sales, and project management

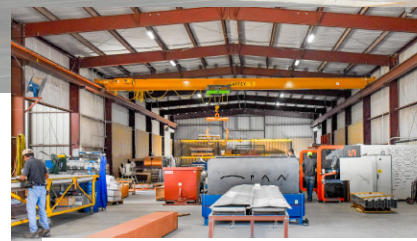
16134 S US Highway 377
Dublin, TX 76446

Monday-Friday
8:00am - 5:00pm

(254) 445-4462
(Se Habla Español)

Toll Free: (877) 746-3253

info@primebldg.com



Get a fast,
FREE quote!



Give us a call or scan the QR code to request a quote.

Retail Branches

Come visit us at one of our four Texas locations.



DUBLIN

19320 S US Highway 377
Dublin, TX 76446
(254) 445-3416



BRIDGEPORT

1509 US Highway 380
Bridgeport, TX 76426
(940) 683-9040



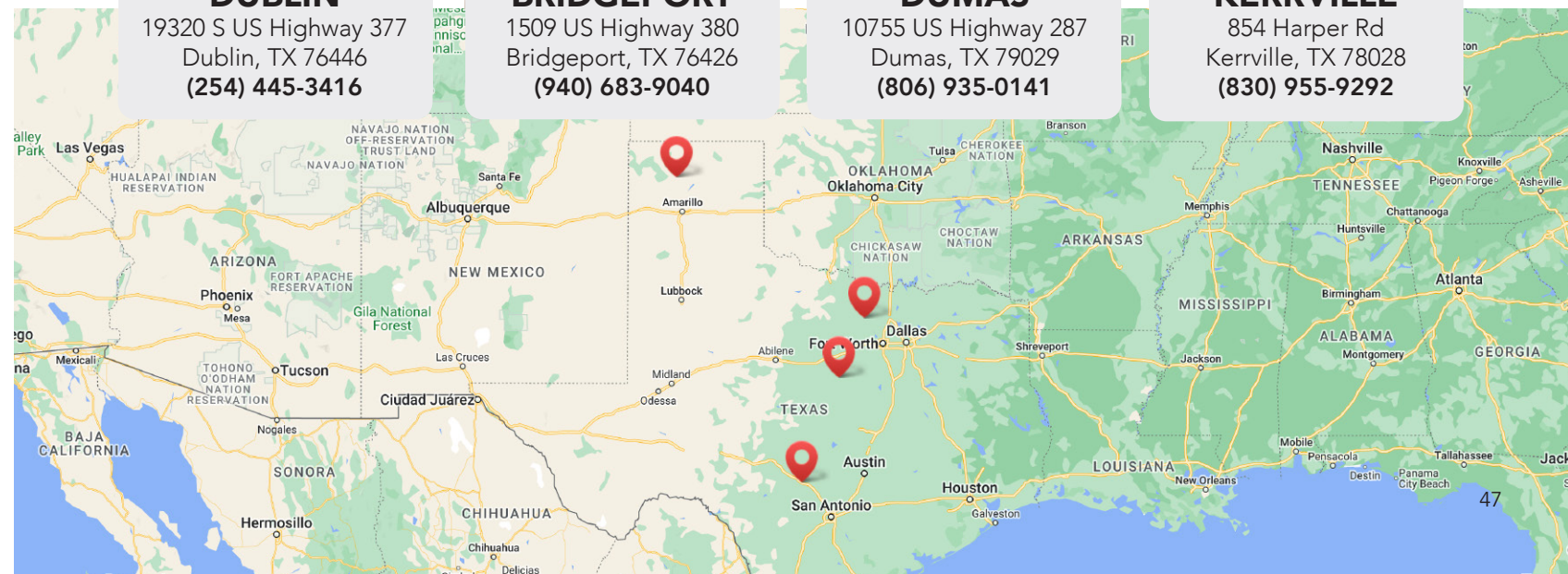
DUMAS

10755 US Highway 287
Dumas, TX 79029
(806) 935-0141



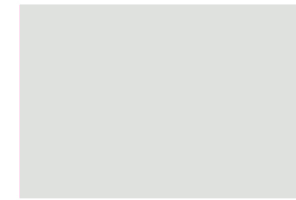
KERRVILLE

854 Harper Rd
Kerrville, TX 78028
(830) 955-9292





WWW.PRIMEBLDG.COM



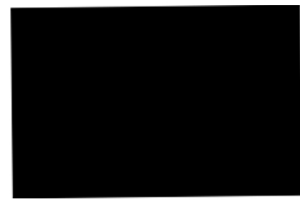
POLAR WHITE



ASH GRAY



CHARCOAL GRAY



BLACK



HAWAIIAN BLUE



DARK BLUE



COLONY GREEN



HUNTER GREEN



FERN GREEN



CRIMSON RED



RUSTIC RED



BERRY



LIGHT STONE



SAHARA TAN



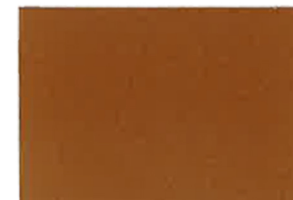
DESERT SAND



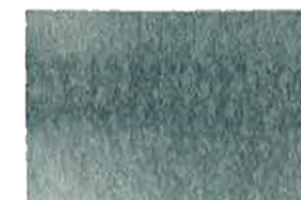
KOKO BROWN



BURNISHED SLATE



COPPER METALLIC



GALVALUME



GALVANIZED

Above colors are matched as closely as possible. Exact color match should be made from metal chip samples.



PROUDLY FINISHED WITH
SHERWIN-WILLIAMS
Coil Coatings



When you need more than a metal building,
YOU NEED PRIME.

IT'S PRIME TIME.

Prime Metal Buildings & Components
16134 S U.S. Hwy 377
Dublin, TX 76446
1-877-746-3253

WWW.PRIMEBLDG.COM