



INNOVATIVE METAL **DAIRY BUILDINGS**



IT'S PRIME TIME

When you need more than a metal building,
you need Prime. Prime Metal Buildings &
Components is the leading designer and
supplier of innovative metal dairy buildings.

WWW.PRIMEBLDG.COM

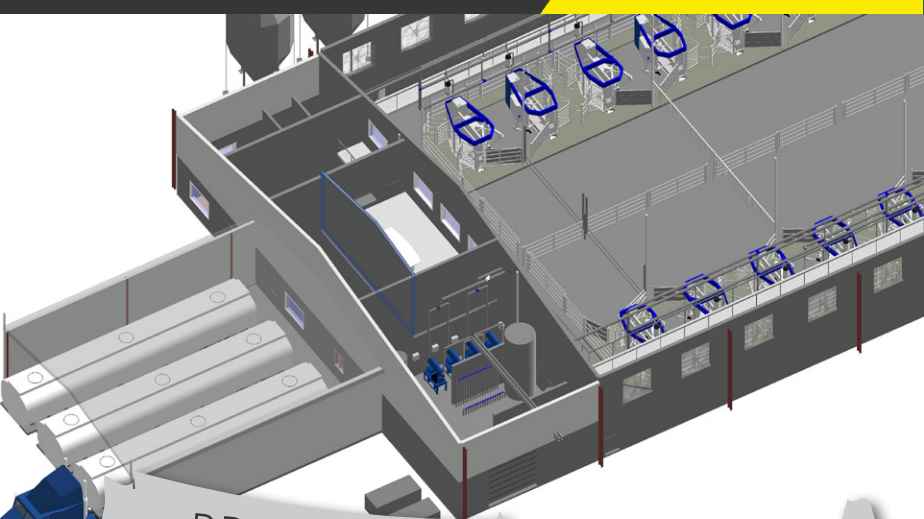
TABLE OF CONTENTS

- 2 > **About Prime**
- 4 > **Manufacturing**
- 6 > **Dairy Buildings**
- 8 > **Robotic Barns**
- 12 > **Cross Ventilated Barns**
- 16 > **Freestall Barns**
- 20 > **Milk Parlors**
- 24 > **Commodity & Hay Barns**
- 28 > **Dairy Project Map**

WHEN YOU NEED MORE THAN A METAL BUILDING, You Need PRIME

You're adding more cows and expanding your operation - you need another freestall, you're retrofitting an existing barn to accomodate robotic technology, or perhaps you are looking to add a larger milking center to handle your new capacity. We've been there. With over 25 years of experience in the dairy industry, we know a thing or two about what it takes to design an innovative dairy facility to maximize cow comfort and milk production while avoiding costly design pitfalls. Prime understands the unique challenges of the dairy industry, and we instill that knowledge into our building designs and layouts. Our wide range of dairy building configurations is constantly evolving to accomodate new technologies. Prime knows what works in dairy facilities because we've worked in them, designed them, and built them for dairymen like you.

We've been in your boots.



OUR PROCESS

Collaborate
First, we listen and learn about your project and your vision. Then our team will assess your needs and make suggestions based on our experiences. We will work with you to make sure that you get the metal building you need.

Design
We use state-of-the-art technology to create preliminary drawings that you can use to visualize your new building. We'll include you in the process as we design your project.

Estimate
Our team of estimators will evaluate your project's design, timeline, and budget to provide you with a detailed quote. With our history of delivering both small and large projects on time and on budget, you can rest assured that we have taken every detail into consideration when formulating your quote.

Commit
Once an agreement has been reached, it's time to sign the paperwork and get started! We'll communicate key production and delivery dates, so you know exactly what to expect.

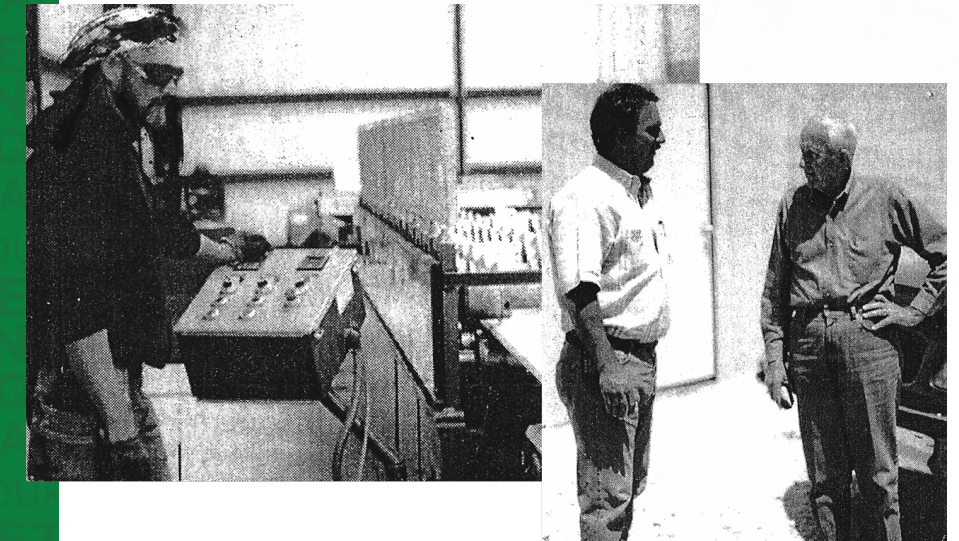
Manufacture
Our in-house production capabilities allow us to manufacture everything that goes into a metal building including primary framing, secondary framing, sheets, and trim. Our streamlined production process has been proven to deliver even the largest facilities on time and on budget.

Support
We're with you from start to finish, and we mean it. Once your building is delivered, we provide support throughout the entire erection process.

Dairy Building Solutions

Our History in the Dairy Industry

In 1997, Keith Brown and the late Bud Sakraida got together and bought a roll former. At the time, Keith owned and operated a dairy equipment business, while Bud had spent the last 50 years designing and constructing dairies throughout the United States. With the background that Keith had in the dairy equipment business and that Bud had in the construction business, modern day Prime was born to support the dairy industry. Today, Prime is still owned and operated by Keith Brown alongside his son, Austin Brown.



"We're reaching out to dairymen with a win-win offer: save time and money by letting our experienced team assess your needs, draw your plans, and supply your necessary buildings."
- Ike Damstra, Metal Building & Dairy Sales



Metal Building Capabilities:



It's Prime Time.
Give us a call for a fast, free quote today!
(254) 445-4462

About Us

Prime is a world-class metal building supplier with a full-blown design department that specializes in commercial dairy facilities. For over 25 years, we have designed, manufactured, and supplied metal buildings for some of the world's largest dairys. We know how to take your ideas and create an efficient dairy facility design. Our design approach is interactive and allows you to be included in every step of the project to ensure you are getting exactly what you need. We build relationships and metal buildings that last. Our capabilities are vast as your imagination.

MANUFACTURING



| Robotic Welding Technology

Scan to watch manufacturing video.

Made by Prime.

From structural steel and purlin to sheets and trim, Prime manufactures all three of the main metal building components in house. Prime's highly skilled employees are proud to put their "made in the U.S.A." brand on each piece of steel that we fabricate. Once fabricated, Prime then ships your custom building directly to your job site, where the steel arrives ready to bolt together with a complete set of erection plans. From expert design to fabrication, Prime does it all for you!



"Keeping all of our manufacturing in house is a big plus for Prime. We are able to have our hands and eyes on every piece of material that comes through the door and every finished product that goes out the door."

- Chris Mosley, General Manager of Structural Fabrication



"We use state-of-the-art technology to manufacture PBR, PBU, 6V, Standing Seam, and Box Rib panels as well as custom made trim. At the end of the day, Prime provides a superior product for our customers."

- Luis Galindo, General Manager of Retail Branches



| Welders & Fitters



| In-house Purlin Lines



| Innovative Trim Break Technology



| Flange Line



| Roll Formers



| Semi-Automatic Pull Through Welder



| CNC Plasma Cutters



| Manufacturer Direct

WE SPEAK DAIRY.

With over 25 years of experience in the dairy industry, we know a thing or two about what it takes to design an innovative dairy facility to maximize cow comfort and milk production while keeping costs down. Prime understands the unique challenges of the dairy industry, and we instill that knowledge into our building designs and layouts. Our wide range of dairy building designs is constantly evolving to accommodate new technologies. Prime's goal is to take a proactive, not reactive approach when incorporating innovative technology into dairy facility designs.

- > Freestall Barns
- > Cross Ventilated Barns
- > Milk Parlors
- > Commodity Barns
- > Robotic Barns
- > And More!

Prime understands that Dairy Operations are businesses that work with living machines, and the machines long term well-being decides the Dairy's long term well-being. Prime knows the environments within the Dairy and the need for proper materials and building configurations.

Greg Beath - Lines to Designs, LLC





Robotic Barns

Over the past 25 years, the evolution of milking equipment and practices has been one of the fastest-growing technologies in the agricultural industry. With robotic milking systems, the need for a separate milking parlor is nonexistent. Automated milking and feeding systems must be taken into consideration during the building design phase. We have seen most robotic facility designs built as an LPCV barn or tunnel ventilated barn although some facilities are choosing to utilize robotic technology in standard freestall setups and separated robotic milk parlors. Prime understands that building designs and layouts must evolve with the industry to ensure the final product works well for many years to come.





| Robotic Barns

| Robotic Milk Parlor



Cross Ventilated Barns

Prime's Cross Ventilated dairy barns are tailor-made with the end goal of maximizing cow comfort. These cross-vent barns allow the dairyman to have more control of the internal barn temperature year-round. Benefits of a Prime cross vent barns include reduced ammonia, more cow comfort, more milk (due to cow comfort), longer milking life (due to cow comfort), improved air quality, consistent temperatures year-round, more housing under one roof, smaller site footprint, fly and bird control, and less parlor to barn travel.





| Cross Ventilated Barns



Freestall Barns

A freestall barn from Prime will meet your dairy's current needs while providing you with the opportunity to expand as your operation grows. Prime has the widest variety of freestall barn designs including our galvanized clear-span barns which provide unobstructed views, our mainframe designs with lean-to's that optimize usable interior space, and our standard pipe & beam freestall. We'll match the right freestall barn design and features to your area's climate and conditions. Our freestall barns are built to withstand the abuse and stresses that buildings experience in the working dairy environment.





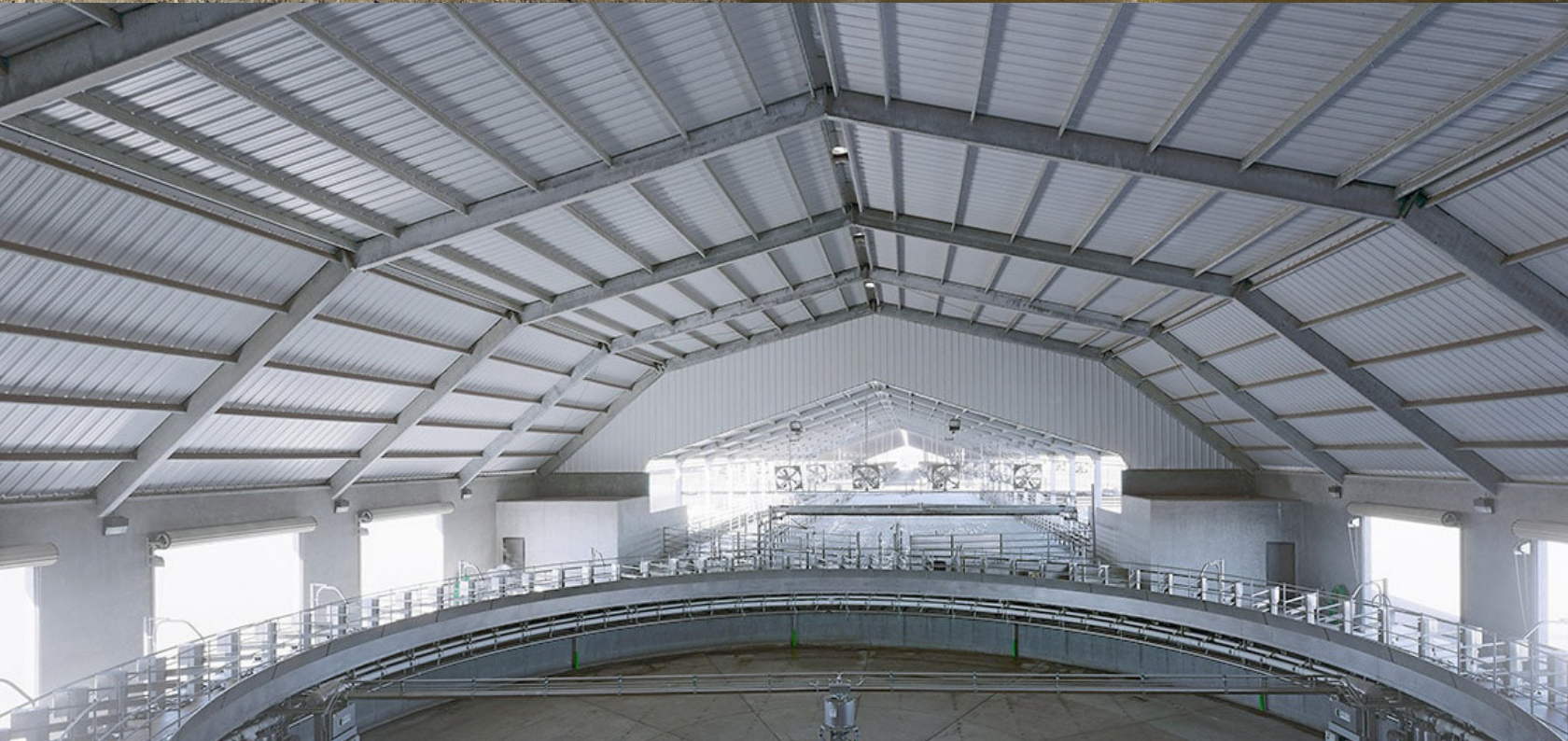
| Freestall Barns



Milk Parlors

Prime knows the unique design requirements of milking centers because our roots are in dairy farming. We've seen what works and what doesn't firsthand and understand the unique challenges to cow flow presented by milk parlors. Whether your operation needs a carousel, dual carousel, herringbone, parallel stalls, or even a robotic milk parlor, Prime will work with you to expertly craft a milk parlor design.







Commodity Barns & Hay Barns

Protecting commodities and equipment from the elements is key to a successful dairy. With a wide selection of commodity barn configurations on hand, Prime will match your facility with a commodity storage building that will work best for your operation.

While there are many factors that contribute to the longevity of your hay supply, the leading cause of hay loss is exposure to the elements. We believe in protecting your investments. Prime's bolt together hay barns are an economical solution to protecting your hay from the elements.





Prime's National Dairy Projects

Over the past 25 years, Prime has been a part of over 300 dairy projects in 28 states. Let us apply our decades of experience to your next project.



| Prime’s National Dairy Projects

Arizona

Pylman Dairy – Buckeye, AZ
Sierra Estrella – Buckeye, AZ
Caballero Dairy - Eloy, AZ
Zinke Dairy Farms – Maricopa, AZ
Ash Creek Dairy - Pearce, AZ
Riverview LLC – Pearce, AZ
Stellar Dairy – Vicksburg, AZ
Riverview Coronado – Willcox, AZ
Turkey Creek Farms – Willcox, AZ

California

Boschma Dairy – Bakersfield, CA
Johann Dairy – Burrel, CA
Fagundes Dairy – Chowchilla, CA
Big Dee Dairy – Fresno, CA
Morning Star Dairy – Fresno, CA
Brown Dairy – Hanford, CA
Rynsburger Dairy – Hanford, CA
Soares Parlor – Hanford, CA
Wrenden Ranch Dairy – Hanford, CA
Generations Dairy – Kerman, CA
Costa View – Madera, CA
Vander Woude – Merced, CA
Sweet Grass Parlor – Palermo, CA
Aukeman Dairy – Shafter, CA
Fagundes Dairy – Snelling, CA
Borba Dairy – Tulare, CA
Fresno Farms – Tulare, CA
Triple H Dairy – Tulare, CA
Valentine Dairy – Tulare, CA
Delta View Dairy – Visalia, CA
Mattos Dairy – Visalia, CA
Rollin Parlor – Visalia, CA

Colorado

Natural Prairie Farms – Antonito, CO
Mars Milky Way Dairy – Ault, CO
Severance Dairy – Ault, CO
Daisy Lane Dairy – Cope, CO
Wolf Creek Dairy – Eaton, CO
Eagle View Dairy – Fort Lupton, CO
Front Range Dairy – Fort Lupton, CO
Cactus Acres – Fort Morgan, CO
Deer Valley Dairy – Fort Morgan, CO
Wildcat Dairy – Fort Morgan, CO
Aurora Dairy – Gill, CO
CBS Dairy – Gill, CO
Crow Creek Dairy – Gill, CO
Monte Vista Dairy – Gill, CO
Spaur Dairy – Gill, CO
Aurora Organic Dairy – Greeley, CO
M&J Dairy – Greeley, CO
Hillrose Dairy – Hillrose, CO
Shelton Dairy – La Salle, CO

Mile High Dairy – Longmont, CO
Aurora Organic Dairy – Milliken, CO
Bella Dairy – Platteville, CO
Lost Creek Dairy – Roggen, CO
Chapin Robotic – Snyder, CO
Riverside Dairy – Snyder, CO
Alpha Cattle Company – Sterling, CO
Whiteside Dairy – Wasco, CA
Eagle View – Weld County, CO
Long Meadow – Weld County, CO
Twin View Dairy – Weld County, CO
Chapin Dairy – Weldona, CO
La Luna Dairy – Wellington, CO
Milk Transport – Wellington, CO
Morning Fresh Dairy – Wellington, CO
Cactus Dairy – Wiggins, CO
Veeman – Wiggins CO
Wolf Creek Dairy – Windsor, CO
Cargill Cattle Feeders – Yuma, CO
Yuma Dairy – Yuma, CO

Florida

University of Florida IFAS – Hague, FL
Hilltop Dairy – Trenton, FL

Georgia

Barrington - Montezuma, GA

Idaho

AA Dairy – Burley, ID
Hansen Quality Feeders – Burley, ID
Oak Valley Dairy – Burley, ID
Wybenga Dairy – Burley, ID
Anderson, Dairy – Declo, ID
Big Sky – Gooding, ID
Notch Butte – Jerome, ID
Si-Ellen Jerome, ID
Toledo Dairy – Kuna, ID
Hans Nederend – Marsing, ID
Beukers Dairy – Oakley, ID
Skyline Dairy – Oakley, ID
Whiteside Dairy – Rupert, ID
AA Dairy – Wendell, ID
Aardema Dairies – Wendell, ID
Bettencourt Dairies – Wendell, ID
Box Canyon Dairy – Wendell, ID

Indiana

Romme/Roessel Dairy – Butler, IN
Vander Vegt Dairy – Fremont, IN
Greving Dairy – Huntington, IN
Natural Prairie Dairy – Lake Village, IN
Varcor – Lake Village, IN
Niessen Dairy – Lewisville, IN
Hendrixson Dairy – Logansport, IN
Homestead Dairy – Plymouth, IN

Smoker Farms – Wanatah, IN
Perkins Dairy – Wolcottville, IN

Iowa

GenoSource LLC – Blainstown, IA
Roorda Dairy – Granville, IA
VanEss Dairy – Hartley, IA
Conover – Holstein, IA
Great Plains Dairy – Holstein, IA
Hickory Hill Farms – Newkirk, IA
Roorda Dairy - Paullina, IA
Dykstra Heifer Barn – Remsen, IA
Multi-Rose Jersey – Rock Rapids, IA
Tukker Dairies – Rolfe, IA
Bud Mouw Dairy – Salix, IA
Owego Dairy – Salix, IA

Kansas

Bird City Dairy – Bird City, KS
McCarty Dairy – Bird City, KS
Carpenter Cattle – Brewster, KS
Hemink Dairy – Cimarron, KS
Wilroads – Doadge City, KS
Deerfield Feeders – Garden City, KS
IDFY – Garden City, KS
Royal Farms – Garden City, KS
Knight Dairy – Lyons, KS
Beefland – Pierceville, KS
McCarty Family Farms – Rexford, KS
Cattle Empire – Satanta, KS
Circle Bar Heifer Ranch – Satanta, KS
Pokie Feeders – Scott City, KS
Syracuse Dairy – Syracuse, KS

Kentucky

Martinez Farms – Columbia, KY

Michigan

New Flevo – Adrian, MI
Tevoortwis Dairy – Bad Axe, MI
Zwemmer Dairy – Bad Axe, MI
Mericam Dairy – Hudson, MI
Vreba Hoff Dairy – Hudson, MI
Preston Dairy – Quincy, MI
Highland Dairy – Sebewaing, MI
Hardy’s Holsteins – Tipton, MI
Dekker Dairy – Ubly, MI

Minnesota

Raak Dairy – Jasper, MN
Scotch Prairie Dairy – Lake City, MN
High Island Dairy – Le Sueur, MN
Blue Mound Dairy – Luverne, MN
New Sweden Dairy – Nicollet, MN
Pater Dairy – Pipestone, MN
Ocheda Dairy – Worthington, MN

Missouri

Shatto Dairy – Osborn, MO
Purina Dairy – St Thomas, MO
Twin Oaks Dairy – St Thomas, MO

Nebraska

Andresen Dairy – Blair, NE
Jisa Farmstead Cheese – Brainard, NE
Stromberger Cattle – Champion, NE
Wakefield Farms – Emerson, NE
Prairieland Dairy – Firth, NE

New Mexico

Ron Jones Dairy – Albuquerque, NM
Haw Dairy – Belen, NM
Stanley Jones Dairy – Clovis, NM
Finerty Dairy – Dexter, NM
Las Uvas Valley – Hatch, NM
Buster Goff – Hobbs, NM
Faria Dairy – Lovington, NM
Frank Brand West – Lovington, NM
Stanley Jones Dairy – Portales, NM
Baker Farms – Roswell, NM
Pirtle Dairy – Roswell, NM

New York

Champion Farms – Clinton, NY
Pine Hallow Dairy – Cortland, NY
Royal J Acres – Ogdensburg, NY
Merrell Farms – Wolcott, NY

Ohio

Zylstra Dairy – Antwerp, OH
Arts Dairy – Convoy, OH
Verwajen Dairy – Mark Center, OH
Stoll Dairy – Marshallville, OH
Schilderink Dairy – Paulding, OH
Vander Made Dairy – Sherwood, OH
BB Land LLC – Wayne, OH

Oklahoma

Vanderlaan Dairy – Frederick, OK
Seaboard Foods – Guymon, OK

Oregon

Columbia Holstein Dairy – Boardman, OR
Columbia Jersey Dairy – Boardman, OR
Columbia River Dairy – Boardman, OR
Hogan Dairy – Boardman, OR
Martin Dairy, LLC – Boardman, OR
Hogan Dairy – Tillamook, OR
Martin Dairy, LLC – Tillamook, OR

Pennsylvania

Beckview Farms – Tyrone, PA

South Dakota

Hilltop Dairy – Brookings, SD
Global Dairy – Bruce, SD
Hammink Dairy – Bruce, SD
Garfield Dairy – Bryant, SD

Moos Dairy – Egan, SD
Prairie Gold Dairy – Elkton, SD
Ailsby Dairy – Flandreau, SD
Stromberger Kadoka – Kadoka, SD
Drumgoon Dairy – Lake Norden, SD
Dutch Dakota Dairy – Lake Preston, SD

Texas

Milk Palace – Amarillo, TX
Brunner Dairy – Canton, TX
Opitz Dairy – Canton, TX
Natural Prairie Dairy – Channing, TX
A.C. Tamminga – Comanche, TX
Indian Ridge – Comanche, TX
Voluma Dairy – Comanche, TX
Wildcat Dairy – Comanche, TX
Kempenaar Dairy – Como, TX
Avi-Lanche Jerseys – Dalhart, TX
Boer Dairy – Dalhart, TX
CDFD Exum West – Dalhart, TX
Dalhart Cattle Feeders – Dalhart, TX
Deer Creek Feeders – Dalhart, TX
Double S Dairies – Dalhart, TX
Faria Exum West – Dalhart, TX
Full Circle Jerseys – Dalhart, TX
Hartley Farms – Dalhart, TX
Morning Star Dairy – Dalhart, TX
Northside Farms – Dalhart, TX
Sunrise Dairy – Dalhart, TX
New Benninger Dairy – De Kalb, TX
Faria Southside – Dimmitt, TX
South Fork Dairy – Dimmitt, TX
South Side Dairy #2 – Dimmitt, TX
Visser Dairy – Dimmitt, TX
Beukeboom Dairy – Dublin, TX
Blue Jay Dairy – Dublin, TX
Fluit Dairy – Dublin, TX
Frontier Dairy – Dublin, TX
Hiddenview Dairy – Dublin, TX
Rancho Pepper – Dublin, TX
Remmington Tanner – Dublin, TX
Sierra Dairy – Dublin, TX
Windmill Dairy – Dublin, TX
C&M Dairy – Dumas, TX
CDFD EXum Dairy – Dumas, TX
Dyas Dairy – Dumas, TX
Faria Brothers Dairy – Dumas, TX
Faria North Dumas Dairy – Dumas, TX
Faria South Dumas Dairy – Dumas, TX
Harvest Dairy – Dumas, TX
High Plains Dairy – Friona, TX
Lone Star Dairy – Friona, TX
Wildcat Dairy – Gustine, TX
Hart Dairy – Hart, TX
Midway Heifers – Hart, TX
Consolidated Dairies – Hartley, TX
DJ Farms – Hartley, TX
G2 Dairy – Hartley, TX
Hartley Farms – Hartley, TX
Jersey Gold Dairy – Hartley, TX
Northfarm Dairy – Hartley, TX

Sunrise Farms – Hartley, TX
Caviness – Hereford, TX
Broumley Dairy – Hico, TX
Horizon Dairy – Hico, TX
Parmer County Dairy – Lazbuddie, TX
Bosma Dairy – May, TX
Hogg Dairy – Miles, TX
Carrell Dairy – Pampa, TX
Legacy Dairy – Plainview, TX
Vista Grande Dairy – Plainview, TX
Hemmi Dairy – Scotland, TX
Hansford County Dairy – Spearman, TX
D&L Dairy – Stephenville, TX
DeVries Dairy – Stephenville, TX
Poston Feed Mill – Stephenville, TX
Tarleton State Dairy – Stephenville, TX
Aurora Organic Dairy – Stratford, TX
Five-Two Dairy – Wills Point, TX
Hemmi Dairy – Windthorst, TX
Vieth Dairy – Windthorst, TX

Utah

Dutch Cowboy – Paragonah, UT
Laub’s Feeding & Cubing – Paragonah, UT
Cedar Ridge Dairy – Sigurd, UT

Virginia

Fox Run Dairy – Augusta County, VA

Vermont

Dubois Brothers – Addison, VT

Washington

Ru-Ben Dairy – Ephrata, WA
Eaglemill Farms – Lynden, WA
Royal Dairy – Royal City, WA
Deruyter – Yakima, WA

Wisconsin

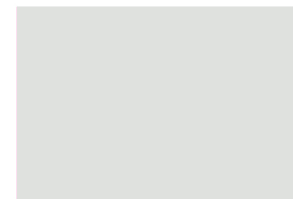
Goodrich Dairy – Baldwin, WI
Birlings Bovines – Black Creek, WI
Dairyland – Black Creek, WI
Williams Dairy – Brodhead, WI
Rivers Edge Dairy – Chilton, WI
Arrowhead Dairy – Chippewa Falls, WI
Kragness Dairy – Colfax, WI
Van De Hei – De Pere, WI
Fretzer Farms – Elmwood, WI
Rock-N-Pines Dairy – Hazel Green, WI
Holsom Dairy – Hilbert, WI
Tri-County Supply – Janesville, WI
Sun Valley Dairy – Neillsville, WI
Siemers Holstein Farms, Newton, WI
West Fork Ranch – Reedsville, WI

Wyoming

Burnette Dairy – Carpenter, WY



WWW.PRIMEBLDG.COM



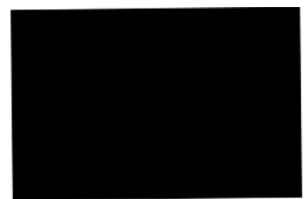
POLAR WHITE



ASH GRAY



CHARCOAL GRAY



BLACK



HAWAIIAN BLUE



DARK BLUE



COLONY GREEN



HUNTER GREEN



FERN GREEN



CRIMSON RED



RUSTIC RED



BERRY



LIGHT STONE



SAHARA TAN



DESERT SAND



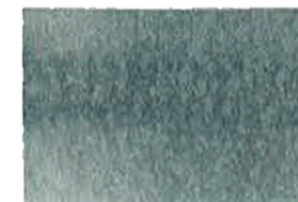
KOKO BROWN



BURNISHED SLATE



COPPER METALLIC



GALVALUME



GALVANIZED

Above colors are matched as closely as possible. Exact color match should be made from metal chip samples.



PROUDLY FINISHED WITH
SHERWIN-WILLIAMS
Coil Coatings



When you need more than a metal building,
YOU NEED PRIME.

IT'S PRIME TIME.

Prime Metal Buildings & Components
16134 S U.S. Hwy 377
Dublin, TX 76446
1-877-746-3253

WWW.PRIMEBLDG.COM