



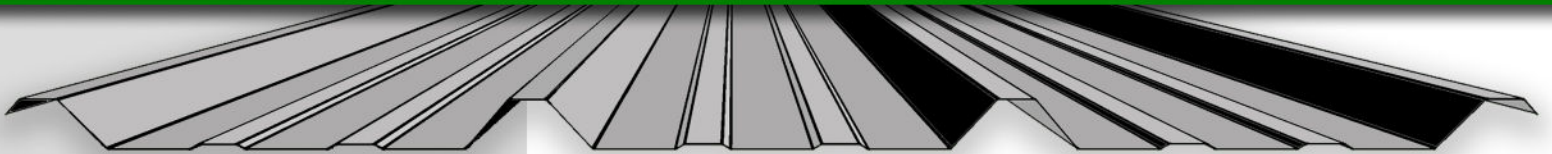
**DUBLIN, TX** (254) 445-3416  
**BRIDGEPORT, TX** (940) 683-9040

**DUMAS, TX** (806) 935-0141  
**KERRVILLE, TX** (830) 955-9292

**f** WWW.PRIMEBLDG.COM



# PBR AND R PANEL 26 GAUGE SHEET METAL



Prime's PBR and R Panels are a durable, energy efficient and time-saving roofing and siding material. They are low maintenance, impact resistant, and offer many advantages over conventional roofing and siding. These PBR and R Panels are offered in many color options, making each a great choice for your next project.

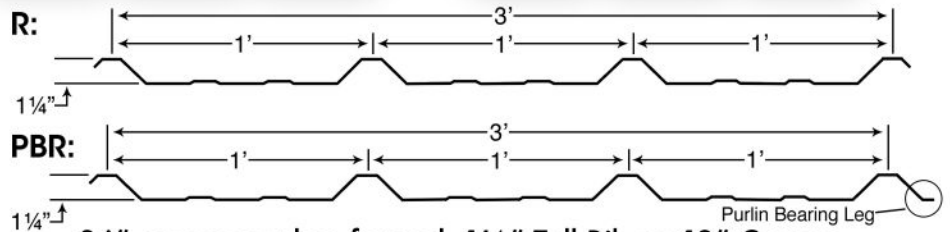
## PRIME'S PBR & R PANEL ADVANTAGE:

- 40 Year Warranty Valspar Painted Products
- 25 Year Warranty Acrylic Coated Galvalume
- Impact Resistant - UL Class 4 Rating
- Fire Resistant - UL Class C Rating
- Custom Trim Capabilites Up To 32' Lengths
- 26-Gauge Standard

\*32' Custom Trim Capabilities may vary based on store location.

## ROLL FORMER ON SITE! CUSTOM CUT SHEET METAL!

Prime provides a 24 hour turnaround on sheet metal and trim. Roll former and trim brake on site! Cut to length panels and custom trim capabilities.



**36" coverage when formed. 1 1/4" Tall Rib on 12" Centers.**  
**Weight: 2.75lbs Per Linear (PBR-Panel) - 2.65lbs Per Linear (R-Panel)**

## PBR & R PANEL COLOR OPTIONS:

Black, Polar White, Ash Gray, Charcoal Gray, Hawaiian Blue, Dark Blue, Colony Green, Hunter Green, Fern Green, Crimson Red, Rustic Red, Berry, Light Stone, Sahara Tan, Desert Sand, Koko Brown, Burnish Slate, Copper, Galvalume.



*NOTE: Colors vary by monitor or print setting. Please contact us to get the most accurate color representation. We will provide you with color samples. Prime reserves the right to add and discontinue colors without notice.*